

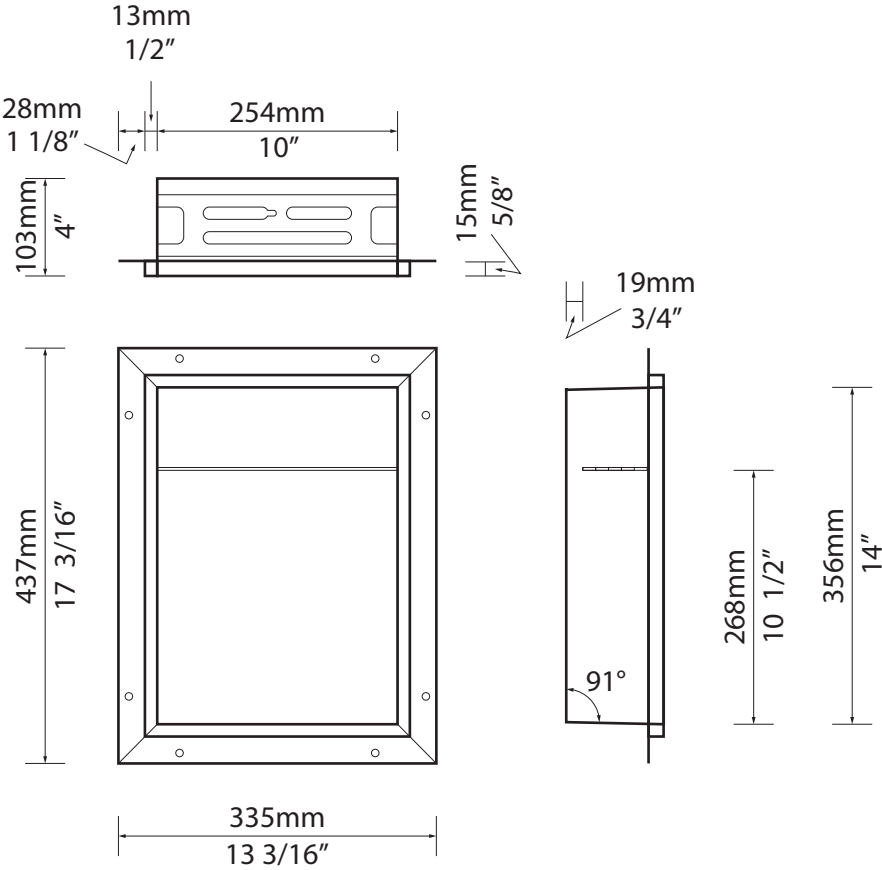
# REDBLOCK SHOWER NICHE INSTALLATION MANUAL

N1014-M Shower Niche

N1028-M Shower Niche

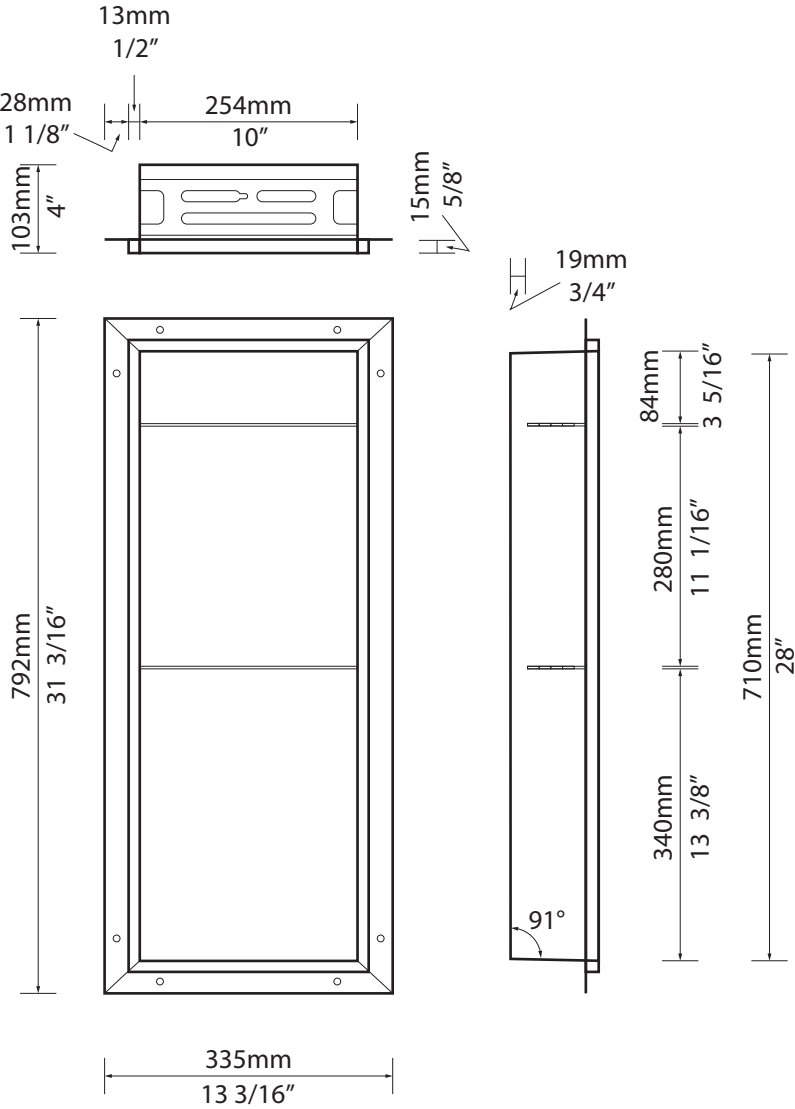
# TECHNICAL DRAWINGS

N1014-M

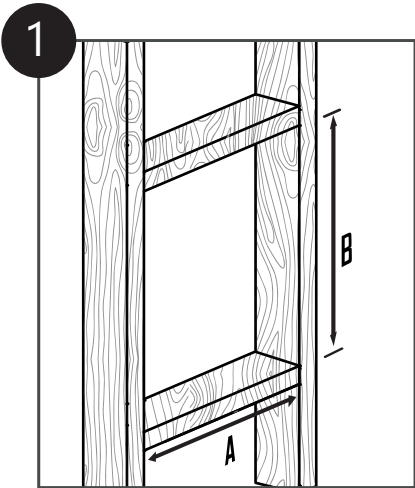


# TECHNICAL DRAWINGS

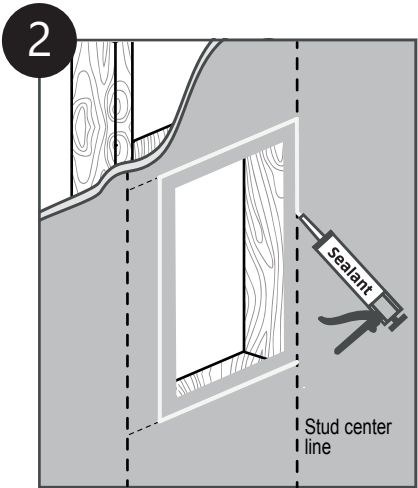
N1028-M



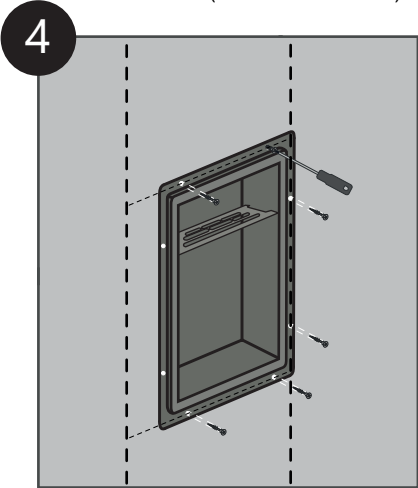
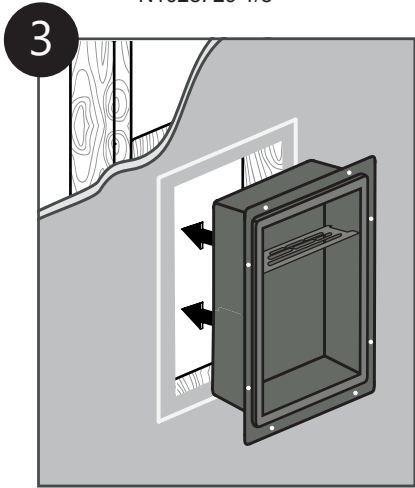
# INSTALLATION



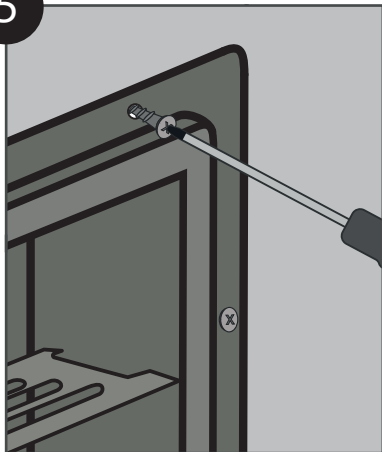
A - Standard stud bay width  
B - Rough-in height for niche install  
N1014: 15 1/8"  
N1028: 29 1/8"



Cutout: N1014-M: 10 1/8" x 14 1/8"  
N1028-M: 10 1/8" x 28 1/8"  
Note: Cutout should be 1 1/4" from stud center line (1/2" from stud face).



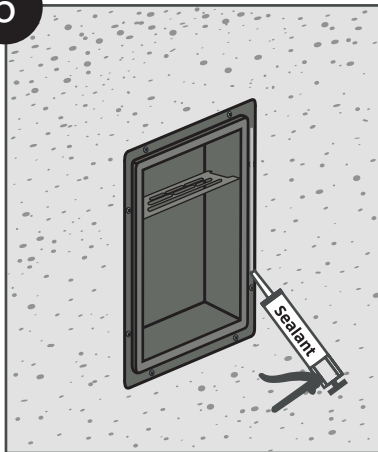
5



Tighten screws only until the flange makes firm contact with backer board.

Over-tightening will distort the flange.

6



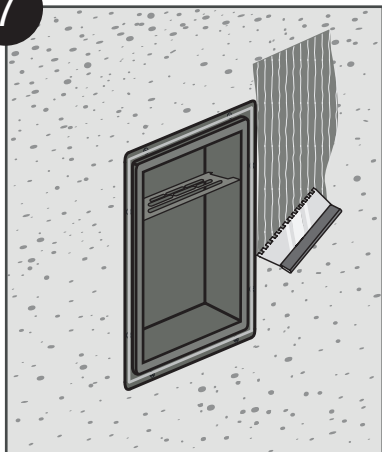
Apply secondary waterproofing around the niche perimeter:

To protect the raised tiling flange from damage, please cover it with masking tape before proceeding.

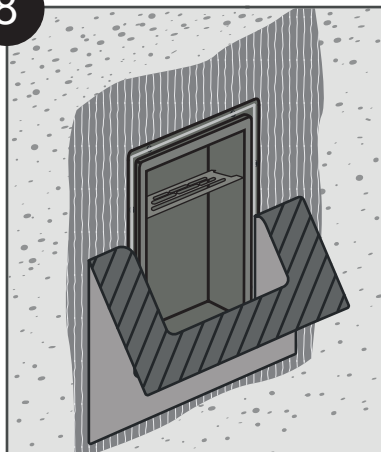
If you're installing a liquid membrane, please ignore steps 6-9.

We recommend the application of Wedi Subliner Dry™ sheet waterproofing membrane around the niche perimeter as a secondary waterproofing layer, using Wedi Joint Sealant as an adhesive. Adhesion of Subliner Dry to the Redblock Niche (with Wedi Sealant), has been verified via lab testing. Please be sure to protect the tiling flange with masking tape before applying sealant.

7



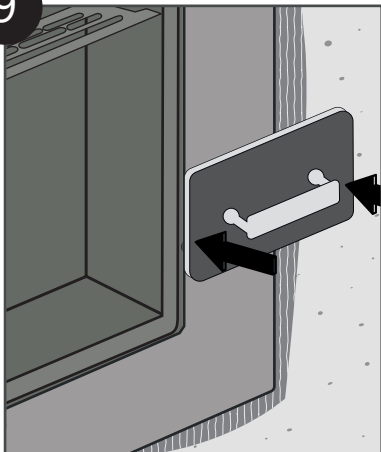
8



If a liquid waterproofing membrane is being applied instead of a sheet membrane, apply it to the mounting flange and of the margin between backer board and flange.

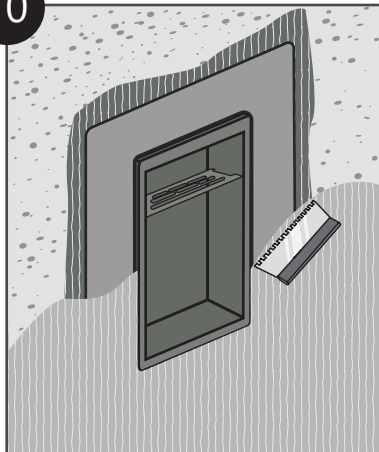
Please be sure to protect the tiling flange with masking tape before this application.

9

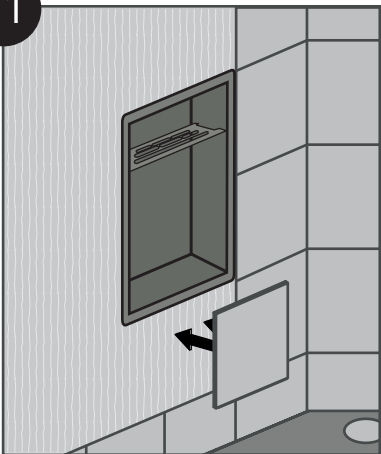


Use a groat float to press membrane firmly into sealant and mortar.

10



11



12





**CAUTION: PLEASE DO NOT USE ANY CLEANER THAT CONTAINS CHLORINE BLEACH** or any chlorinates.

Chlorine bleach can damage stainless steel and all other metal surfaces over time.

If you insist on using a chlorine bleach containing cleaner in your shower, try to avoid the niche and/ or shelf surfaces and promptly remove any residue that may end up on these surfaces.

We recommend that you use only non-abrasive cleansers for cleaning our products. The first cleaning step should always be with warm water, a clean rag (or sponge), and a little bit of scrubbing. A mild liquid dish detergent can also be used (as long as it does not contain chlorine bleach – see above). To reduce the chance of scratching, take care to wipe in the direction of the grain (direction of SS striations).

Another option would be \*OxiClean powder dissolved in water. If you would like more details on this or other cleaning options, please visit our [Stainless Steel Cleaning Page](#).

\* OxiClean is a registered trademark of Church & Dwight Co., Inc.



